



# DOWFLAKE™ Xtra

## 83-87% CALCIUM CHLORIDE

### General Description

DOWFLAKE Xtra 83-87% calcium chloride is an odorless, flaked product. DOWFLAKE Xtra meets ASTM D98 and AASHTO M144 requirements for calcium chloride purity. ASTM classification for DOWFLAKE Xtra is "Type S; Grade 1, Class A."

### Applications

DOWFLAKE Xtra possesses several unique properties that make it the ideal choice for dust control, deicing and concrete acceleration applications.

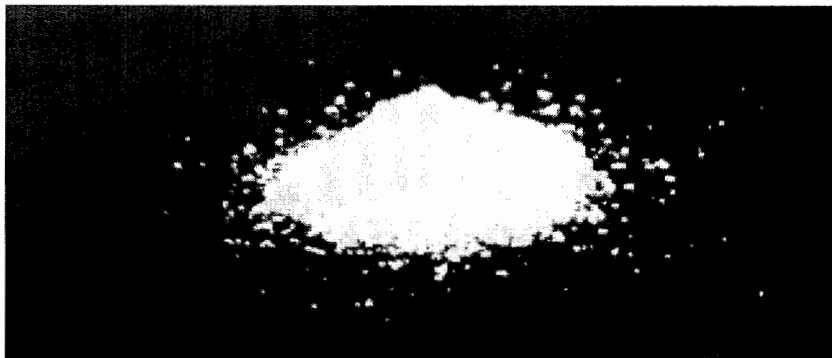
When applied to unpaved roadways, parking lots, walkways and golf cart paths, DOWFLAKE Xtra reduces dust by continuously absorbing moisture from the air, keeping the surface slightly damp and binding dust particles to larger aggregate.

The heat releasing property of DOWFLAKE Xtra works to melt snow and ice faster than rock salt, magnesium chloride, potassium chloride, urea or blends of these products.

The addition of DOWFLAKE Xtra to concrete results in higher earlier strength, faster setting time, improved workability and uniform cure for concrete.

Other approved applications for DOWFLAKE Xtra, such as tire weighting and brine refrigeration, require putting the material into solution. Refer to the information on the back of this sheet for guidance on dissolving DOWFLAKE Xtra in water to make solutions of various concentrations.

For further information on the safe, appropriate and effective use of DOWFLAKE Xtra in these and other applications, please contact the Customer Information Group at 1-800-447-4369 or visit the Dow Calcium Chloride web site [www.dowcalciumchloride.com](http://www.dowcalciumchloride.com).



### Product Properties

Test Item	Specification Limit	Typical Values	Notes*
Calcium chloride assay	83% min.	85%	1
Total alkali chlorides, (as NaCl)	6.0% max.	4.1%	2
Total magnesium (as MgCl <sub>2</sub> )	0.5% max.	0.03%	2
Calcium hydroxide	0.2% max.	0.07%	2
Passing U.S. Std 3/8 inch sieve	100% min.	100%	
Passing U.S. Std #4 sieve	80% min.	94%	
Passing U.S. Std #30 sieve	5% max.	1%	
Bulk Density	45 – 54 lbs/ft <sup>3</sup>	49 lbs/ft <sup>3</sup>	3

\*Notes: (all percentages are by weight)

1. Test method is similar to ASTM E449, (Standard Test Methods for Analysis of Calcium Chloride). This method is not capable of differentiating between calcium chloride and certain salt impurities, most notably those containing strontium and bromide.
2. Reported on an active ingredient basis. To convert from an "active ingredient" basis to an "as received" basis, multiply the impurity % by the CaCl<sub>2</sub> assay in decimal form. For example, total alkali chlorides at 4.1% on an "active ingredient" basis = 4.1% x 0.85 = 3.49% on an "as received" basis for 85% CaCl<sub>2</sub>.
3. Bulk density is a specification item for bulk shipments only.

Applications not specifically recognized by Dow may not be safe or appropriate for use of DOWFLAKE Xtra.

### Safety and Handling

For brief contact, no precautions other than clean body-covering clothing should be needed. Selection of specific items such as goggles, gloves, and apron will depend on the operation. Eye/face protection is recommended for dusty operations or when handling solutions. Appropriate ventilation should be in place to keep atmospheric levels

below industrial hygiene guidelines (Dow IHG for calcium chloride is 10m<sup>3</sup>).

### Availability

DOWFLAKE Xtra calcium chloride is available in various package sizes and in bulk truck and bulk rail.

Consult authorities for proper disposal information.

**For full safety and handling details, contact The Dow Chemical Company for a current copy of the Material Safety Data Sheet for this product.**